

Oberwiesstrasse 56

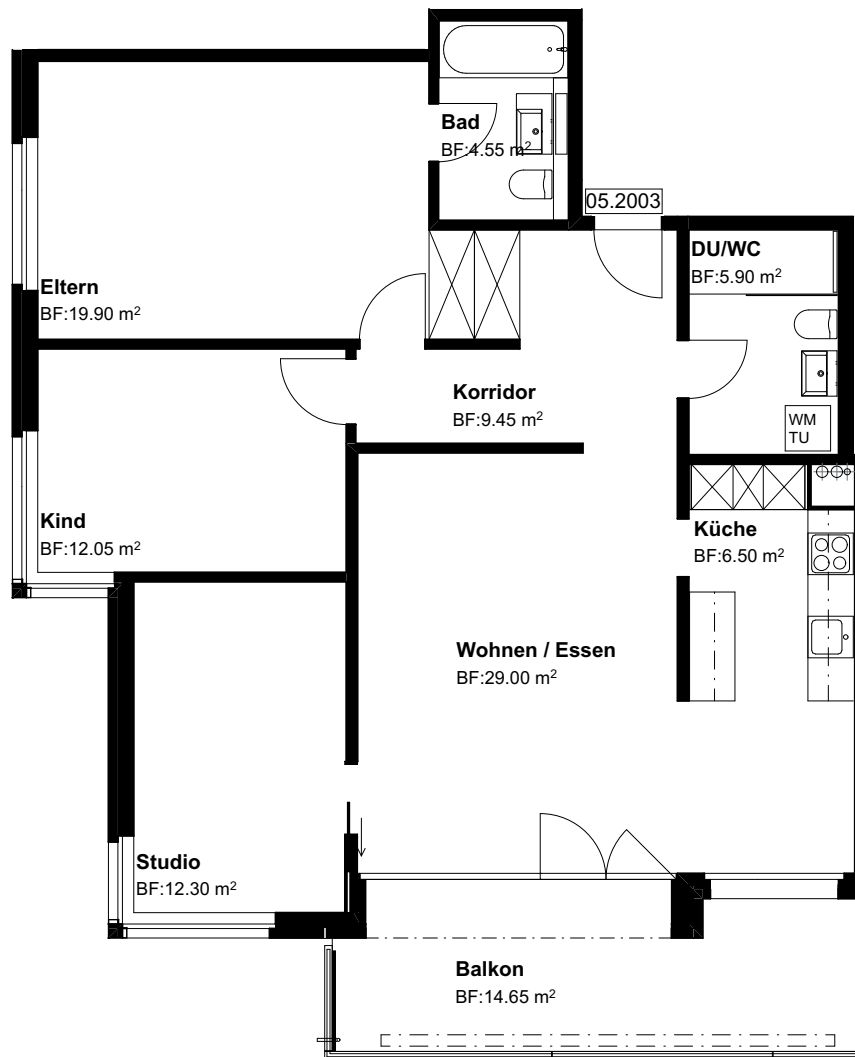
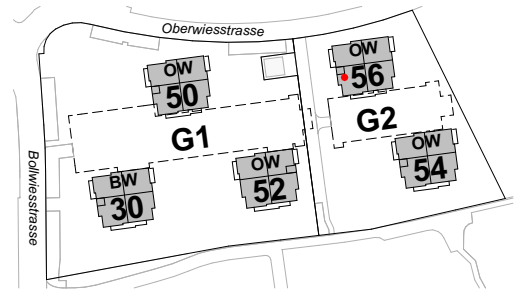
8645 Jona-Rapperswil

2.OG, 4.5 Zi-Whg

Nr. 05.2003

Fläche beheizt
Fläche unbeheizt
mit Lift

99.65 m²
14.65 m²



Grundriss Mst. 1:100
Änderungen bleiben vorbehalten

0 3m

