

Oberwiesstrasse 56

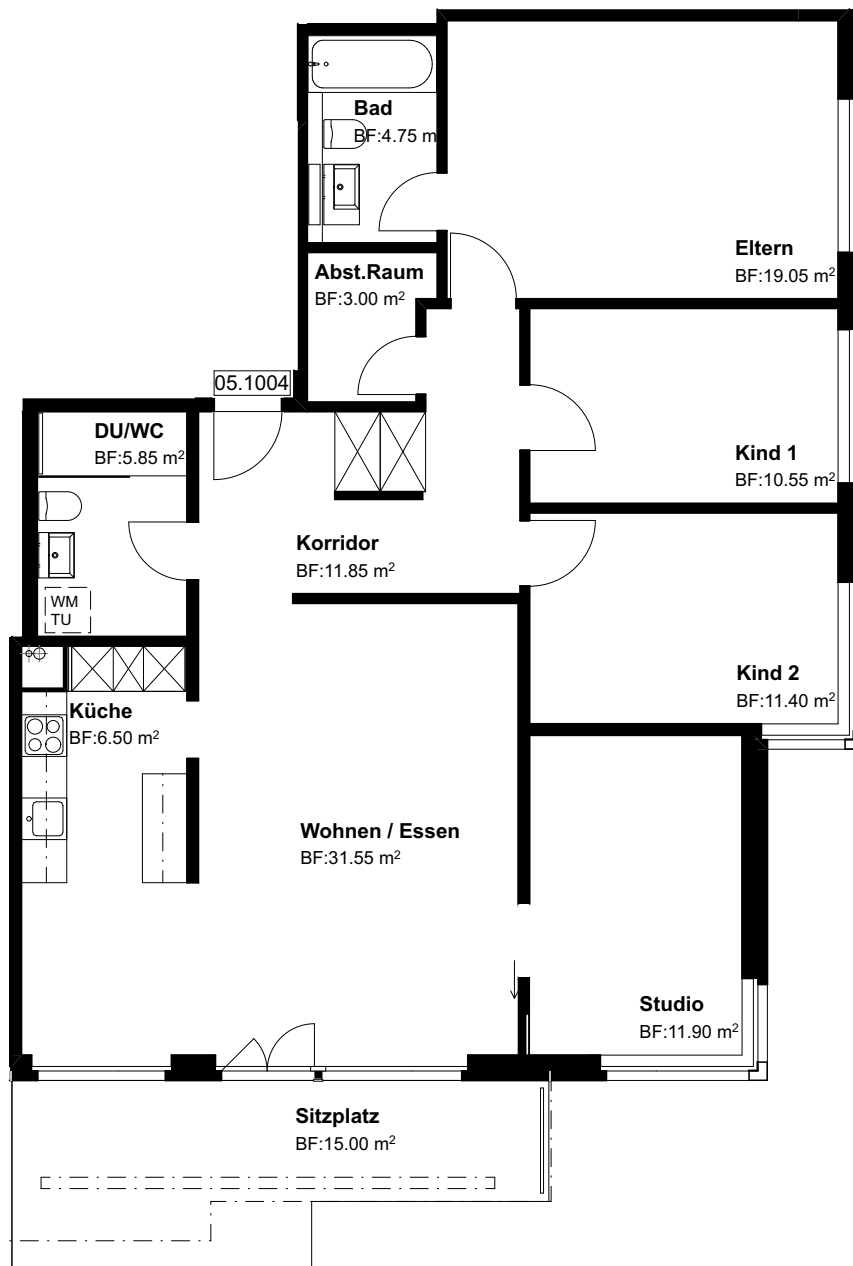
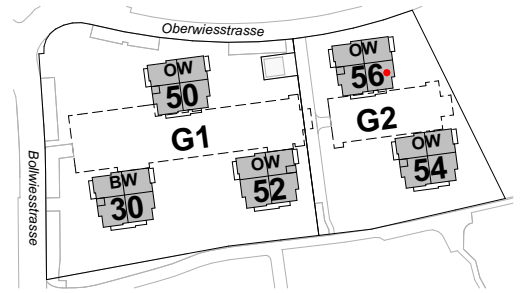
8645 Jona-Rapperswil

1.OG, 5.5 Zi-Whg

Nr. 05.1004

Fläche beheizt
Fläche unbeheizt
mit Lift

116.40 m²
15.00 m²



Grundriss Mst. 1:100
Änderungen bleiben vorbehalten

0 3m

