

Oberwiesstrasse 56

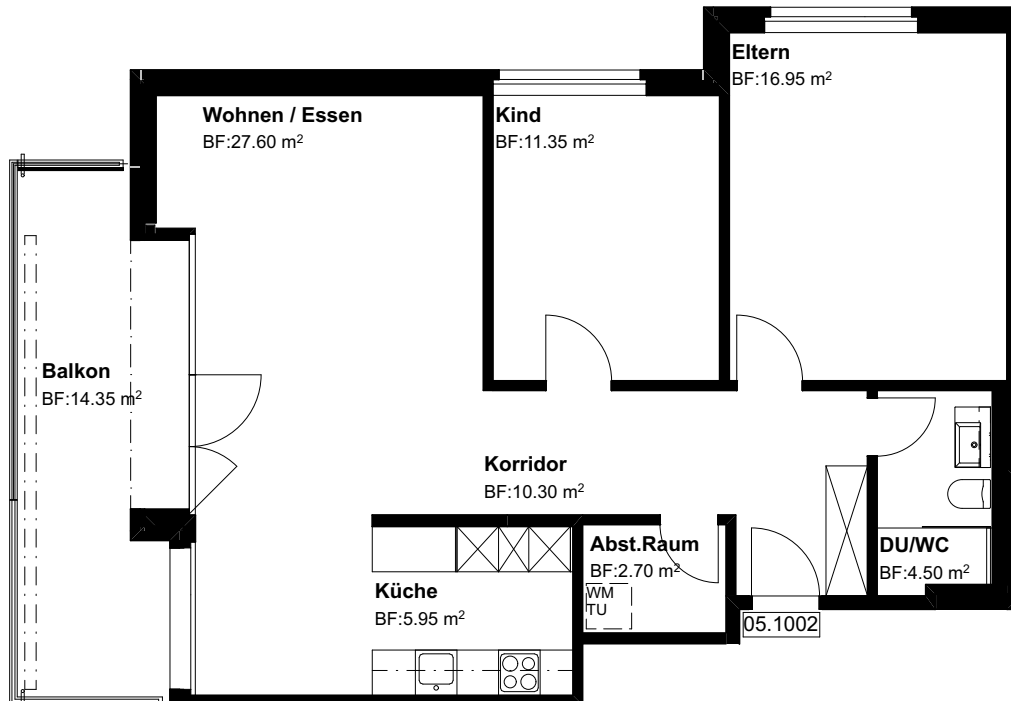
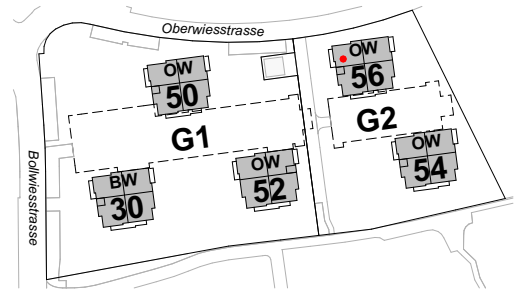
8645 Jona-Rapperswil

1.OG, 3.5 Zi-Whg

Nr. 05.1002

Fläche beheizt  
Fläche unbeheizt  
mit Lift

79.35 m<sup>2</sup>  
14.35 m<sup>2</sup>



Grundriss Mst. 1:100  
Änderungen bleiben vorbehalten

0 3m

