

Oberwiesstrasse 52

8645 Jona-Rapperswil

3.OG, 2.5 Zi-Whg

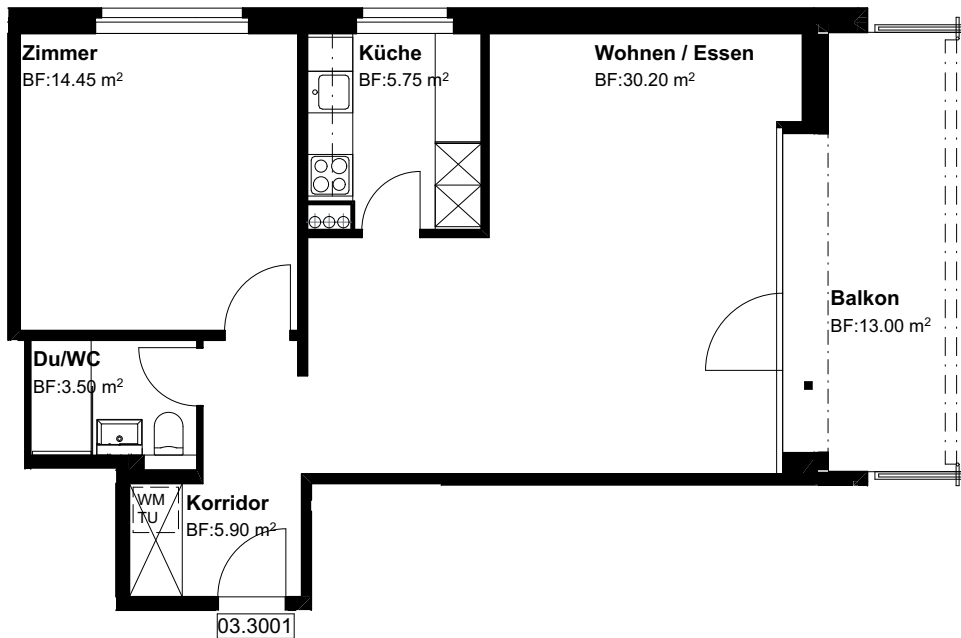
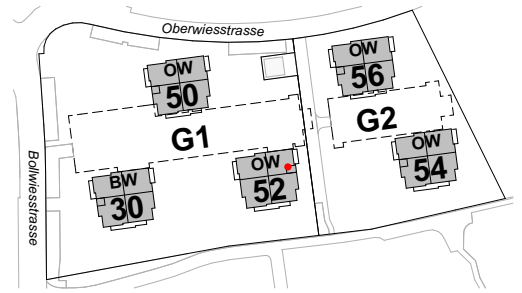
Nr. 03.3001

Fläche beheizt

59.80 m²

Fläche unbeheizt
mit Lift

13.00 m²



Grundriss Mst. 1:100

Änderungen bleiben vorbehalten

0 3m

