

Oberwiesstrasse 52

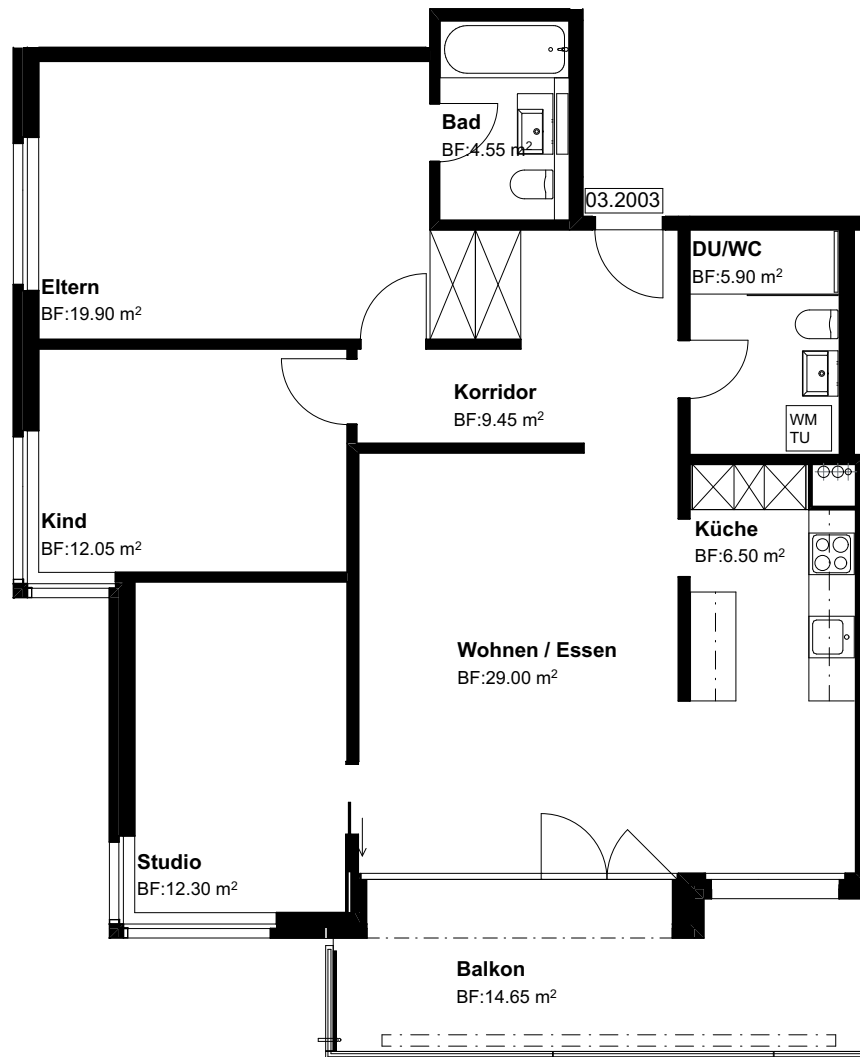
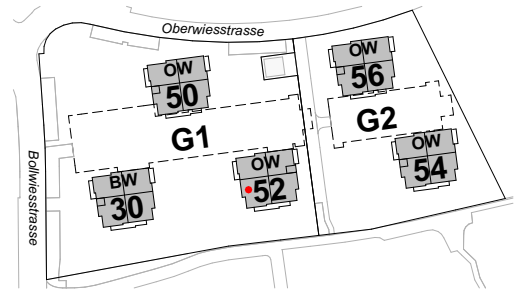
8645 Jona-Rapperswil

2.OG, 4.5 Zi-Whg

Nr. 03.2003

Fläche beheizt  
Fläche unbeheizt  
mit Lift

99.65 m<sup>2</sup>  
14.65 m<sup>2</sup>



Grundriss Mst. 1:100

Änderungen bleiben vorbehalten

0 3m

N

