

Oberwiesstrasse 50

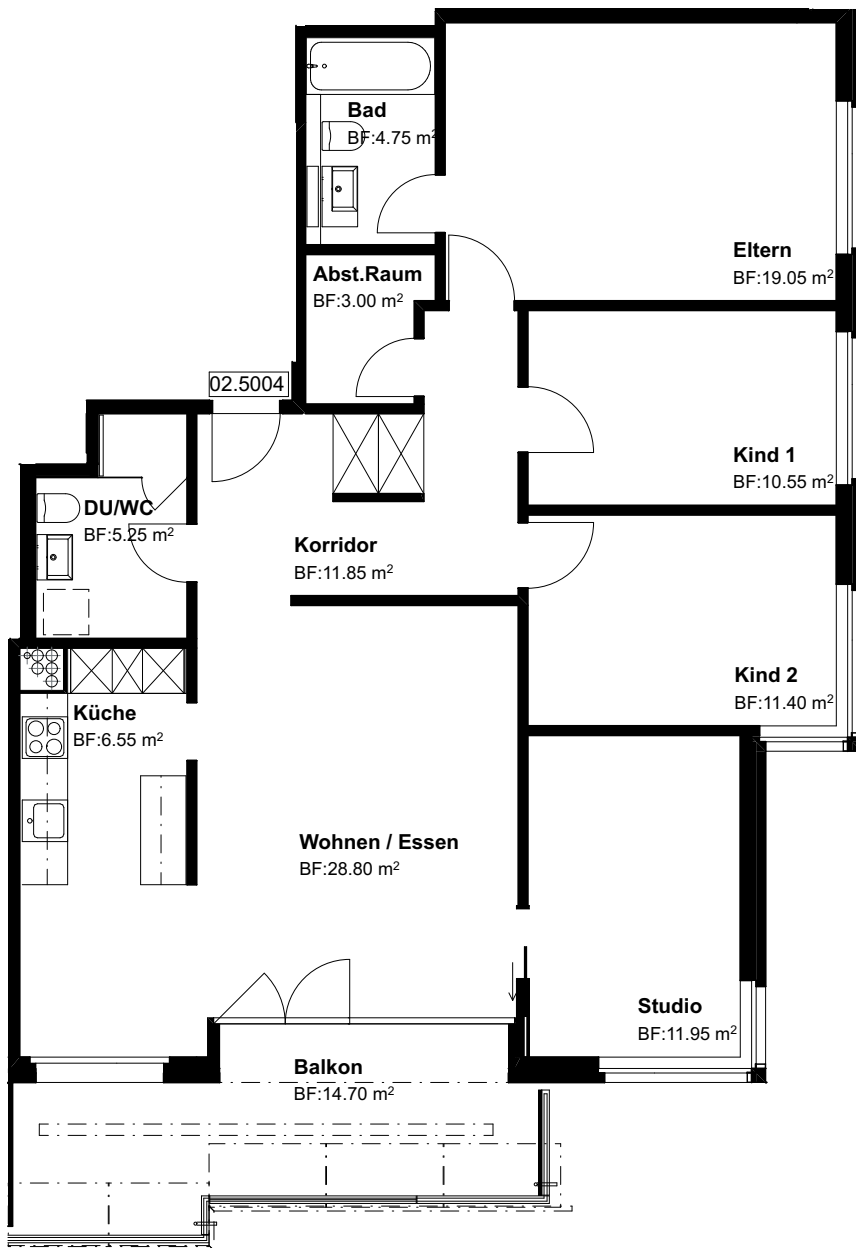
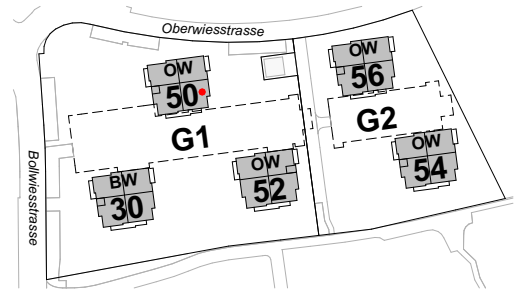
8645 Jona-Rapperswil

5.OG, 5.5 Zi-Whg

Nr. 02.5004

Fläche beheizt
Fläche unbeheizt
mit Lift

113.15 m²
14.70 m²



Grundriss Mst. 1:100

Änderungen bleiben vorbehalten

0 3m

