

Oberwiesstrasse 50

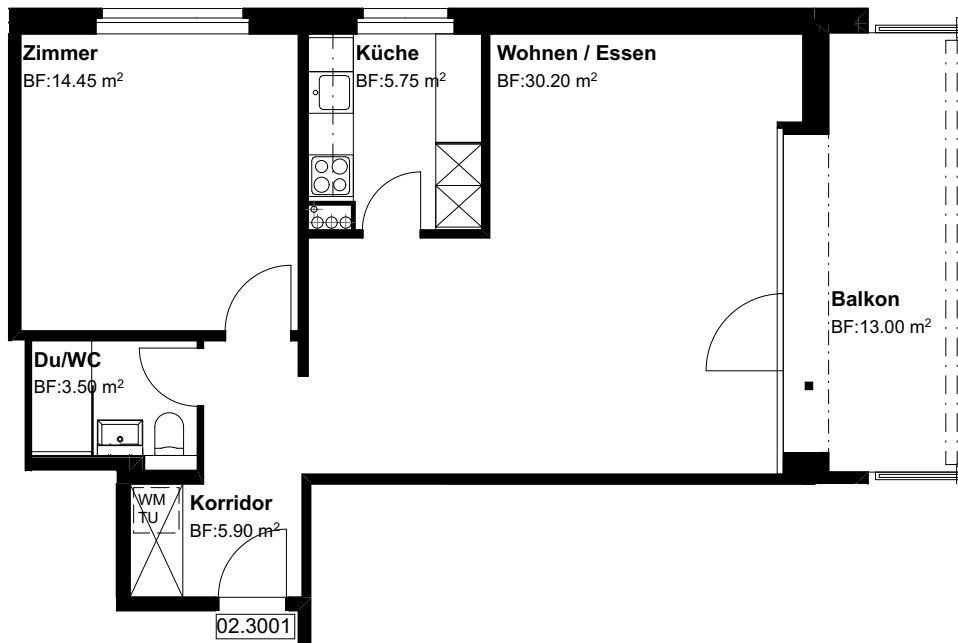
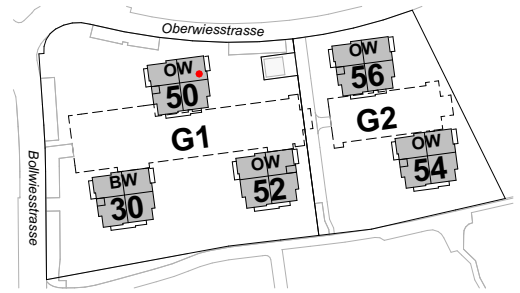
8645 Jona-Rapperswil

3.OG, 2.5 Zi-Whg

Nr. 02.3001

Fläche beheizt
Fläche unbeheizt
mit Lift

59.80 m²
13.00 m²



Grundriss Mst. 1:100
Änderungen bleiben vorbehalten

0 3m

