

Oberwiesstrasse 50

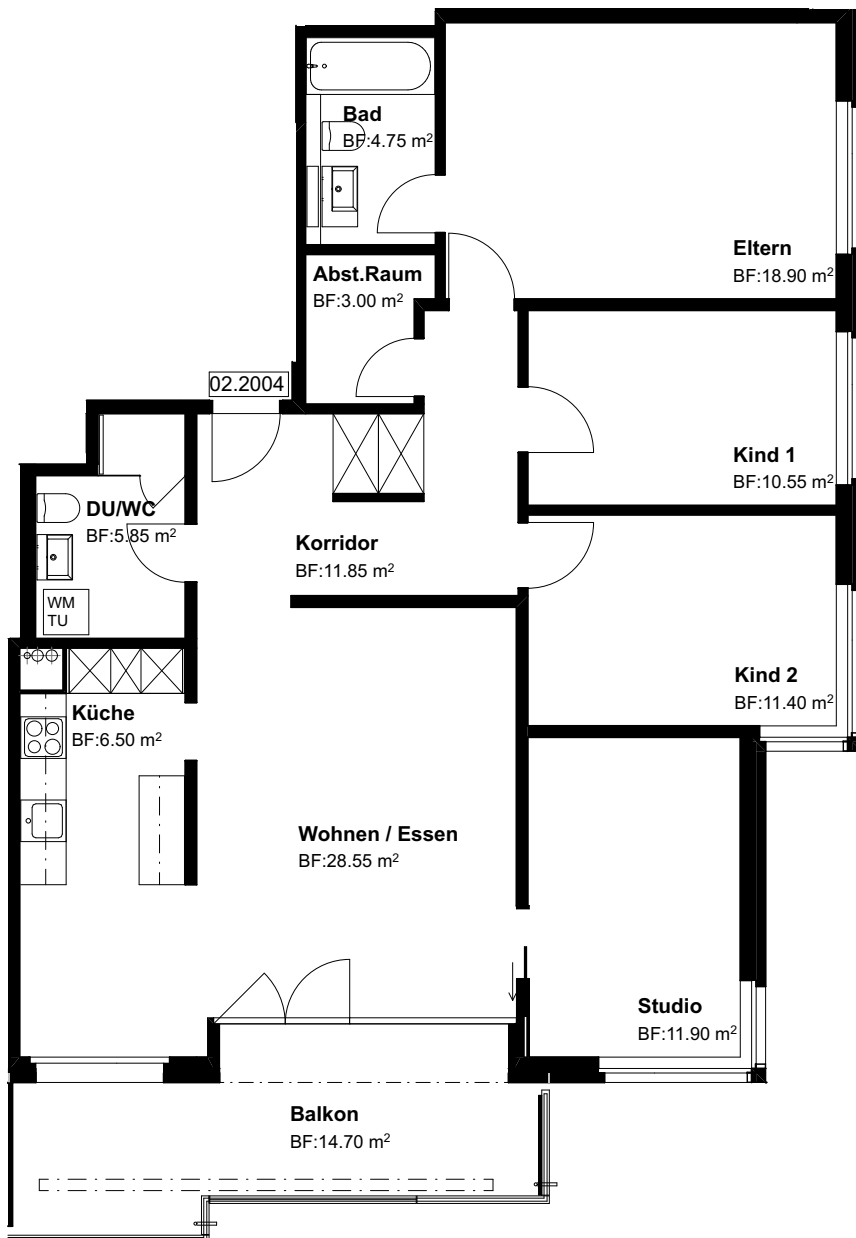
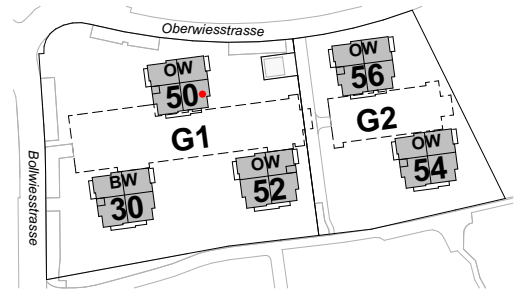
8645 Jona-Rapperswil

2.OG, 5.5 Zi-Whg

Nr. 02.2004

Fläche beheizt
Fläche unbeheizt
mit Lift

113.25 m²
14.70 m²



Grundriss Mst. 1:100

Änderungen bleiben vorbehalten

0 3m

