

Oberwiesstrasse 50

8645 Jona-Rapperswil

2.OG, 2.5 Zi-Whg

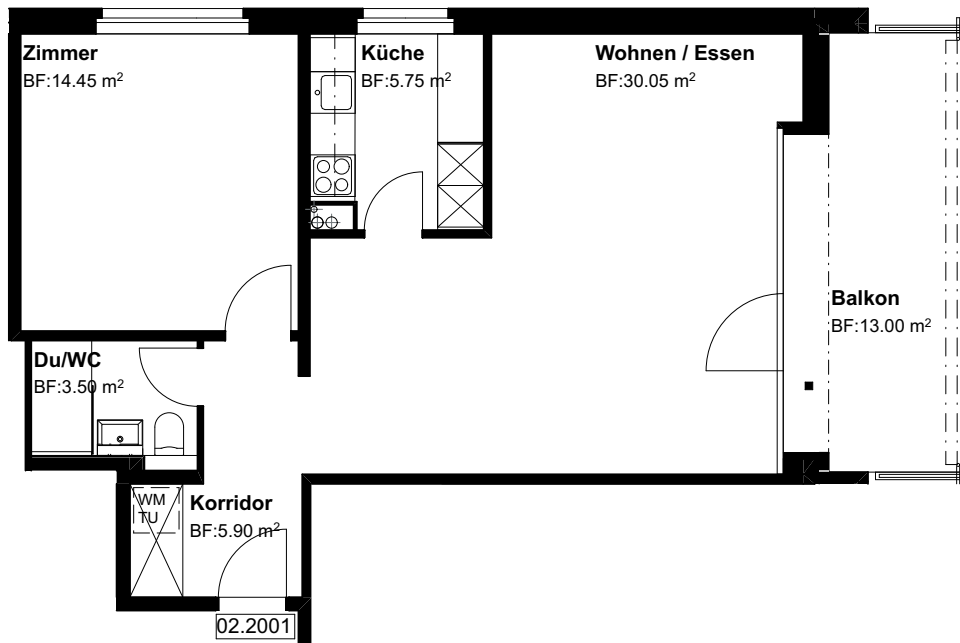
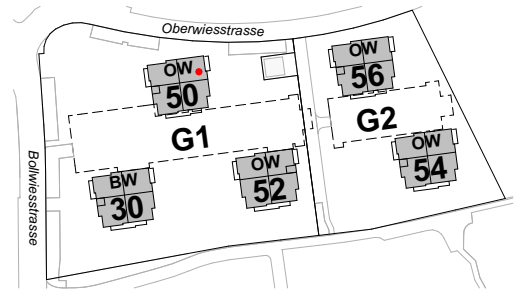
Nr. 02.2001

Fläche beheizt

59.65 m<sup>2</sup>

Fläche unbeheizt  
mit Lift

13.00 m<sup>2</sup>



Grundriss Mst. 1:100

Änderungen bleiben vorbehalten

