

Bollwiesstrasse 30

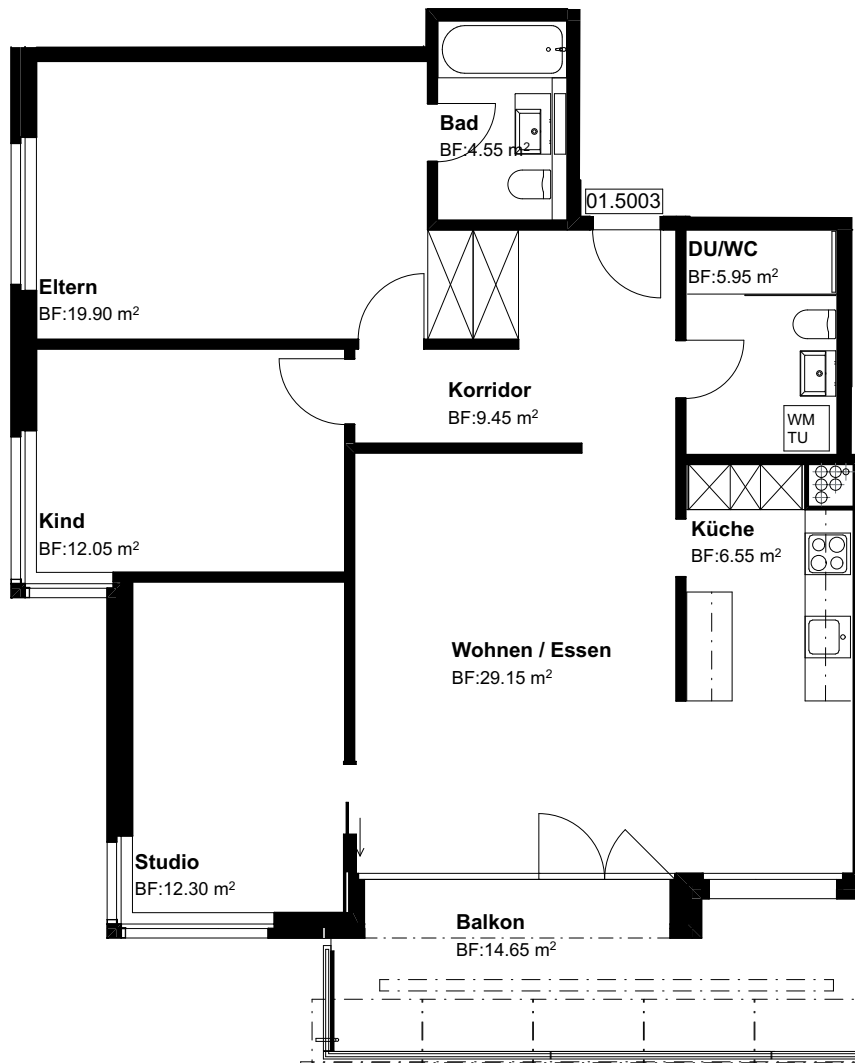
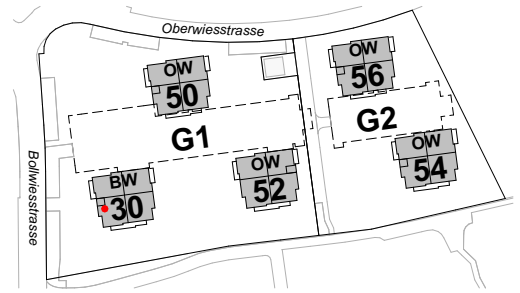
8645 Jona-Rapperswil

5.OG, 4.5 Zi-Whg

Nr. 01.5003

Fläche beheizt  
Fläche unbeheizt  
mit Lift

99.90 m<sup>2</sup>  
14.65 m<sup>2</sup>



Grundriss Mst. 1:100

Änderungen bleiben vorbehalten

0 3m

