

Bollwiesstrasse 30

8645 Jona-Rapperswil

5.OG, 2.5 Zi-Whg

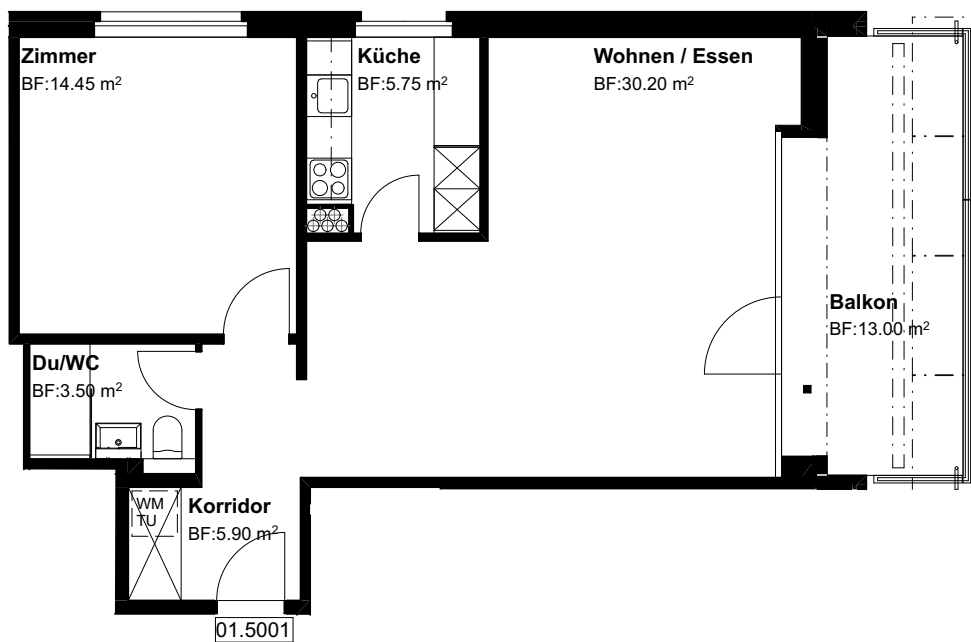
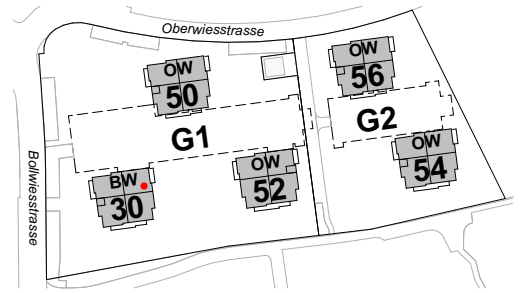
Nr. 01.5001

Fläche beheizt

59.80 m²

Fläche unbeheizt
mit Lift

13.00 m²



Grundriss Mst. 1:100

Änderungen bleiben vorbehalten

0 3m

