

Bollwiesstrasse 30

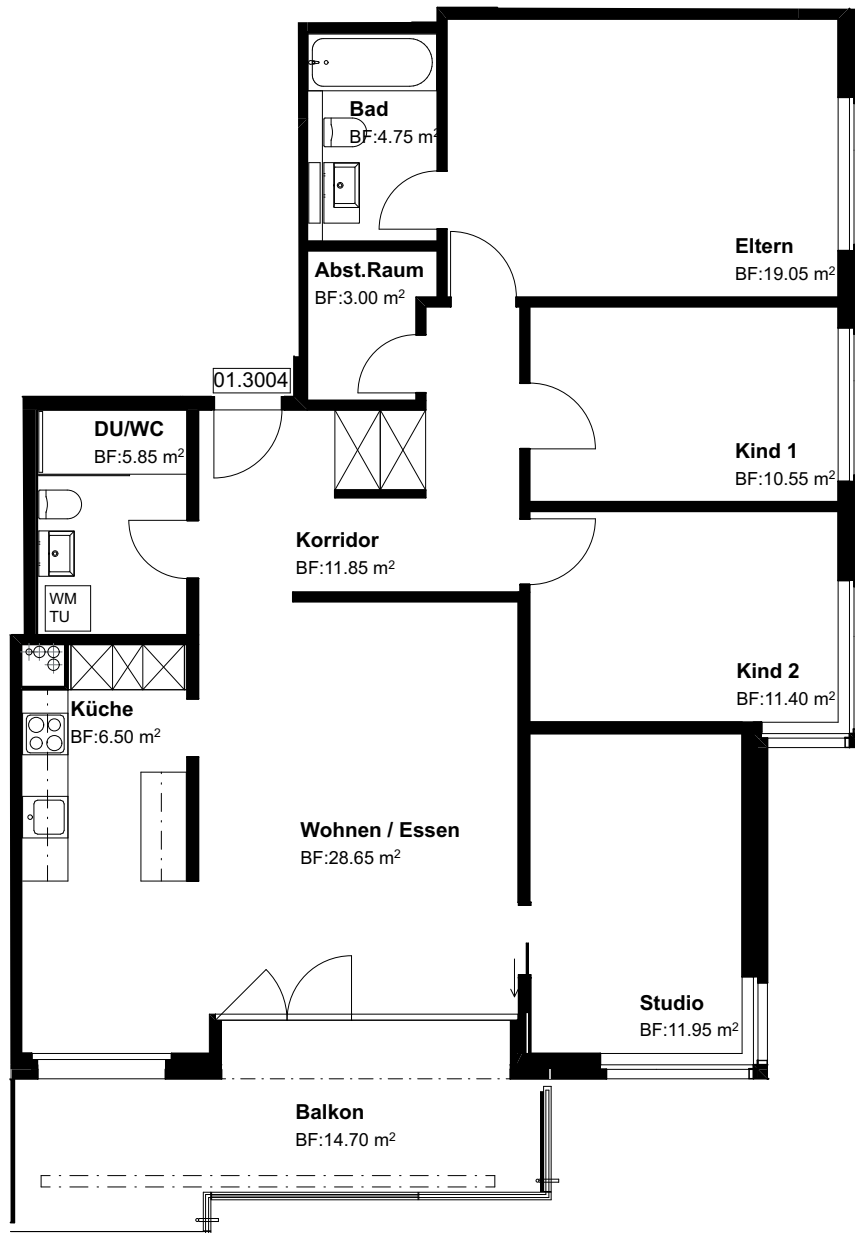
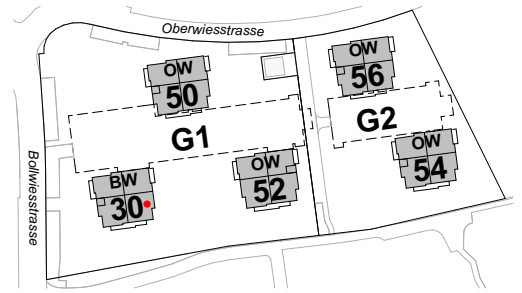
8645 Jona-Rapperswil

3.OG, 5.5 Zi-Whg

Nr. 01.3004

Fläche beheizt
Fläche unbeheizt
mit Lift

113.55 m²
14.70 m²



Grundriss Mst. 1:100

Änderungen bleiben vorbehalten

0 3m

