

Bollwiesstrasse 30

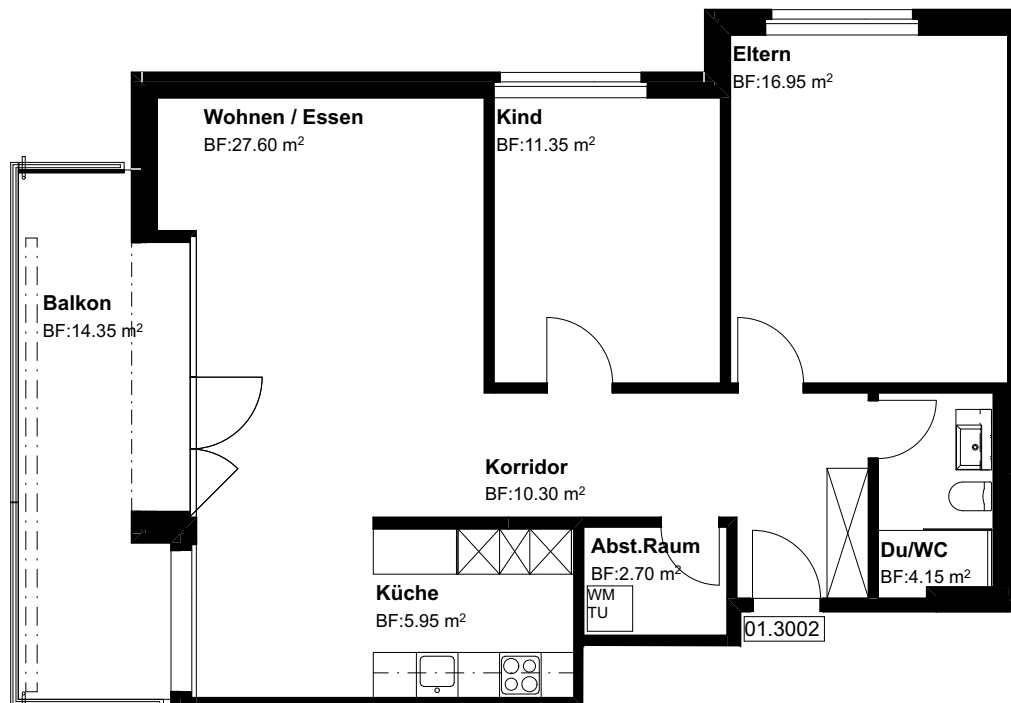
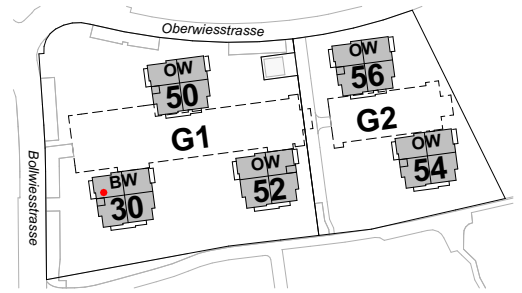
8645 Jona-Rapperswil

3.OG, 3.5 Zi-Whg

Nr. 01.3002

Fläche beheizt
Fläche unbeheizt
mit Lift

79.00 m²
14.35 m²



Grundriss Mst. 1:100

Änderungen bleiben vorbehalten

0 3m

