

Bollwiesstrasse 30

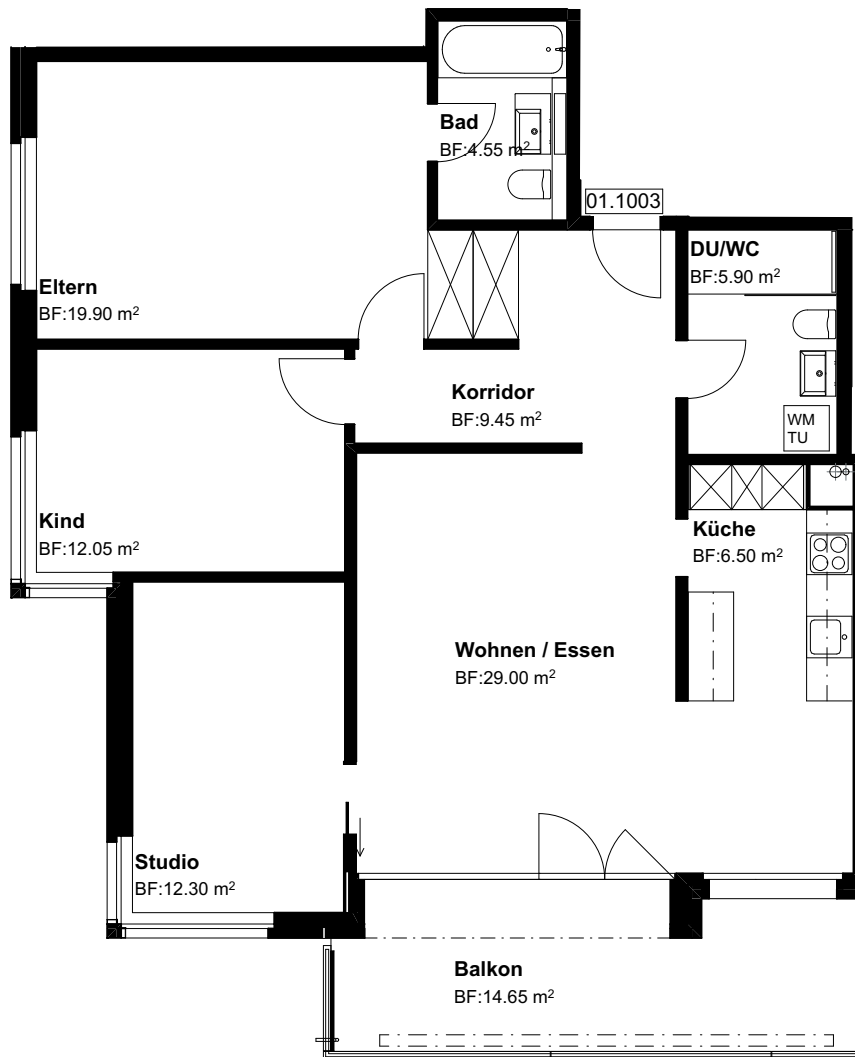
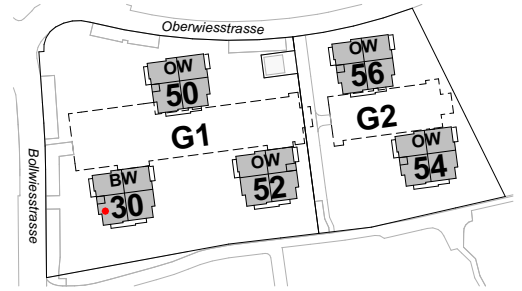
8645 Jona-Rapperswil

1.OG, 4.5 Zi-Whg

Nr. 01.1003

Fläche beheizt
Fläche unbeheizt
mit Lift

99.65 m²
14.65 m²



Grundriss Mst. 1:100

Änderungen bleiben vorbehalten

0 3m

N

