

Bollwiesstrasse 30

8645 Jona-Rapperswil

1.OG, 2.5 Zi-Whg

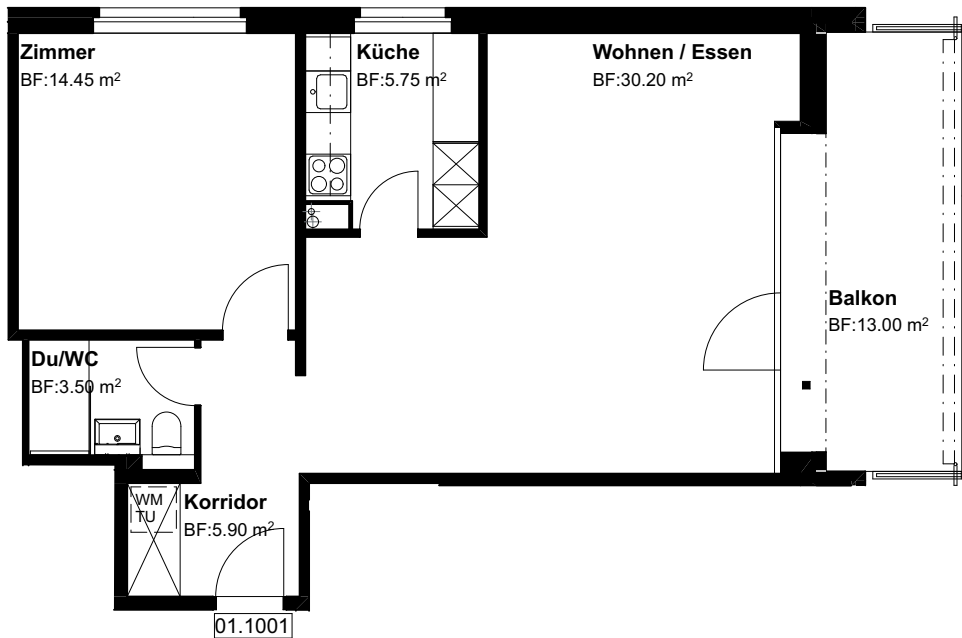
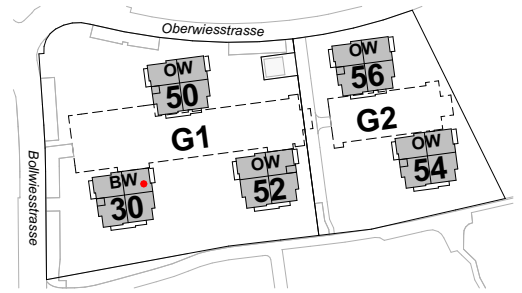
Nr. 01.1001

Fläche beheizt

59.80 m<sup>2</sup>

Fläche unbeheizt  
mit Lift

13.00 m<sup>2</sup>



Grundriss Mst. 1:100

Änderungen bleiben vorbehalten

